



The TRAINING TIMES

a publication of the

OREGON/SOUTHERN IDAHO LABORERS-EMPLOYERS TRAINING TRUST FUND

APRIL 2014



Director's Review By Training Director Al DeVita

Spring is here! It brings longer days, drier weather, and the hope for lots of construction work. We hope that this is a prosperous year for you and all Laborers in the United States and Canada. Most reports indicate that work hours should be up for the year and there may even be shortages of skilled labor in the future. Now is a good time to add to your skills and polish your resume by taking training in Pipelaying, Concrete, Grade Checking, or Rigging and Signaling.

New Schedule

In this edition of the Training Times, you'll find the new schedule for May through August. With the new schedule, there is an important change that you should know about. Where we could, we went to ten-hour, four-day classes. For those attending classes in Corvallis, that means less time away from work and home.

One of the most important factors to consider with this change is how the longer days impact the effectiveness of training. We will be monitoring training effectiveness closely in a variety of ways. If you are planning on attending training in Corvallis with this modified schedule, please let the staff know your thoughts, your constructive feedback is important to us. For now, it is anticipated that we will continue the "four tens" schedule until the clocks are set back in November.

New Permit Required Confined Space class

As Laborers, we perform all kinds of work in confined spaces. There are many potential hazards in confined spaces that are killers. In 2012, Oregon OSHA came out with a new rule for working in confined spaces. Within the next year, OROSHA will publish revisions to this standard. We are working to keep up with these changes and will be providing a new class, Permit Required Confined Space (PRCS), to help our employers satisfy some of the requirements of the new standard. As a participant, you will learn about potential hazards in confined spaces, how to control them, rescue equipment and procedures, PPE and other components of a typical PRCS program. This class is 24 hours long. Upon successful completion, you will receive a wallet card and certificate.

Apprenticeship Program

In 2013, our Apprenticeship Program indentured 100 new apprentices. Overall, the program has grown by about 25% since March of last year. We are anticipating continued demand from our partner employers for Laborer apprentices and will be holding our first Pre-Construction Training (PCT) class starting April 7th. An additional PCT is set for the middle of June.

In case you didn't know, the Apprenticeship Program must follow a very rigorous "selection process" when indenturing a new apprentice. We must report to BOLI all of our actions surrounding our selection procedures and demographics of who we selected. The first step in the process is to attend a program orientation. The orientation discusses the Laborers trade, program requirements, the application process, and additional steps that must be taken in order to qualify for entry.

The schedule for these presentations can be found on our website, www.osilaborerstraining.org, go to the link for "Upcoming Orientations." We need good people in our program, so if you know someone that you think has the right stuff, direct them to our website or to one of the Local Union halls.

If you are a journey worker, you should know that apprentices are depending on you to help them learn the trade. Apprentices on your jobs need your guidance and feedback to become skilled, productive, and safe. Your experience and wisdom are valuable to them. By passing it on, you help to keep our trade viable.

Investing your time in an apprentice shows them that you value them. Because of this, they are less likely to leave the trade or jump to another trade, and they are more likely to complete their apprenticeship. We are stronger when we have a strong apprenticeship program. Please take an interest in training an apprentice today. It will be a rewarding experience for both of you!

Apprentice receives company's award

James Bradford, a second-term apprentice has received an "Apprentice All-Star" award from his em-

ployer, JH Kelly. The company gives the award to one apprentice each month. James' supervisor, Darin Randall says, "his ability to problem solve and make adjustments as the day progresses has served him well and makes him stand out on the project. He is consistently learning and seeking explanation and guidance while performing tasks to improve his ability..." For his efforts, James has been awarded \$100 and a whole lot of encouragement. Congratulations James, keep up the good work! Thanks to JH Kelly for recognizing James and investing in apprenticeship.

Women in Construction Conference

Later this month, Apprentice Coordinator Aida Aranda will be leading a group of Oregon Laborers to the *Women Building the Nation* conference in Sacramento, CA. This conference will bring over 600 women together from all of the crafts and across the country. The National Building and Construction Trades department is one of the conference sponsors. Topics will include pre-apprenticeship programs, career retention and advancement, and leadership development. This is the fourth annual edition of this national conference for women in the trades and it is the largest conference of its type in the world.

Training Program Produces New Videos

In February, we released three new videos that promote the Apprenticeship Program. Each video features a journey worker who has completed the Oregon Laborers Apprenticeship Program. Thanks to Anjanet Banuelos, Luis Lorea, and Liz Stewart for sharing their stories about where they came from and how they succeeded as apprentices. Also, thanks to Kiewit Infrastructure West and Walsh Construction for graciously allowing access to their jobsites in the making of these videos. You can view the videos by subscribing to our YouTube Channel at OSILaborers or find it on our Facebook page at facebook.com/orlaborersapprenticeship.

(cont. on page 4)



Liz Stewart, a recent graduate of the Apprenticeship Program and an Iraq War Veteran, on her job with Walsh Construction in Portland.

WHAT'S INSIDE — May - August Class Schedule

OREGON SUMMER 2014 CLASS SCHEDULE

MONTH	MONDAY	TUESDAY	WEDNESDAY	THURSDAY	FRIDAY	SATURDAY
MAY	5	6	7	8	9	10
	General Construction 2					
	12	13	14	15	16	17
	Mason Tending					
	Grade Checking					
	Rigging and Signaling Refresher ☺					
	19	20	21	22	23	24
	Rigging and Signaling					
	Concrete 1					
	Blueprint Reading					

JUNE	16	17	18	19	20	21
	Rigging and Signaling					
	General Construction 3					
	23	24	25	26	27	28
	Forklift Refresher	Forklift Operator				
	30	1	2	3	4	5
	Concrete Cutting and Coring					
	Construction Math					
	First Aid/ CPR	Rigging and Signaling Refresher				

40 hour classes will run 4-10 hour days. These classes run from 6:30 AM to 5:00 PM.

All other classes start at 7:30 AM unless otherwise listed.

All sessions of a class must be attended to receive certification or qualification.

CLASS LOCATION KEY:

- Corvallis
- Portland - Local 296
- Vancouver - Local 335

OREGON SUMMER 2014 CLASS SCHEDULE

MONTH	MONDAY	TUESDAY	WEDNESDAY	THURSDAY	FRIDAY	SATURDAY
JULY	7	8	9	10	11	12
	Grade Checking					
	OR Asbestos Worker Refresher	OR Asbestos Supervisor Refresher	Hazardous Waste Refresher	WA Asbestos Worker Refresher	WA Asbestos Supervisor Refresher	
	14	15	16	17	18	19
	General Construction 2					
	Rigging and Signaling					
	Pipelaying 1					
	21	22	23	24	25	26
	Asbestos Worker					
	Blueprint Reading					
	28	29	30	31	1	2
	Concrete 1					
	Permit Required Confined Space					

AUGUST	4	5	6	7	8	9
	General Construction 3					
	OHS 10 ⚡					
	11	12	13	14	15	16
	Small Equipment Operator					
	Rigging and Signaling Refresher ⚡					
	18	19	20	21	22	23
	Rigging and Signaling					
	Permit Required Confined Space					
	25	26	27	28	29	30
	Concrete 1					
	Construction Math					

⚡ Class is from 5:30 - 9:30pm

For more information on classes, latest news and schedule changes visit:

www.osilaborerstraining.com



OREGON/SOUTHERN IDAHO
LABORERS-EMPLOYERS TRAINING TRUST FUND
6011 NE MARCUS HARRIS AVENUE
CORVALLIS, OR 97330
WWW.OSILABORERSTRAINING.ORG
WWW.FACEBOOK.COM/ORLABORERSAPPRENTICESHIP



PRSR STD
US POSTAGE
PAID
PORTLAND, OR
PERMIT NO. 816

NON-DISCRIMINATION POLICY

The Oregon and Southern Idaho Laborers-Employers Training Trust Fund admits students of any race, color, national origin, ethnic origin, and gender and all students have the rights, privileges, programs, and activities generally accorded or made available to students at the school. The Oregon & Southern Idaho Laborers-Employers Training Trust Fund does not discriminate on the basis of race, color, national origin, gender, and ethnic origin in administration of its educational policies, admission policies, scholarship and loan programs, and any other programs that ARE administered by the Training Trust Fund.

Training Required by the CBA

As you probably know, there are new training requirements in the collective bargaining agreement. A part of these requirements is that every member has Rigging and Signaling Qualifications and OSHA 10 training. A few questions have come up and need to be clarified.

Question: “If I took an OSHA 10 class a long time ago, is my card still good?”

Answer: It is recommended that you take an OSHA 10 at least once every four years. New and revised regulations are published regularly. It is good for you (and the Union, and our employers) to know the latest regulations.

Question: “What is the difference between the 16-hour and 40-hour Rigging and Signaling Qualification classes?”

Answer: The 16-hour class was designed as a refresher for the 40-hour class. We encourage those with experience to take this class. However, if you have less experience or your math skills need an upgrade, than you should take the 40-hour class. The 40-hour class has hands-on activities that allow you to practice with a live operator and a 20-ton hydraulic crane. Refresher training is due every three years.

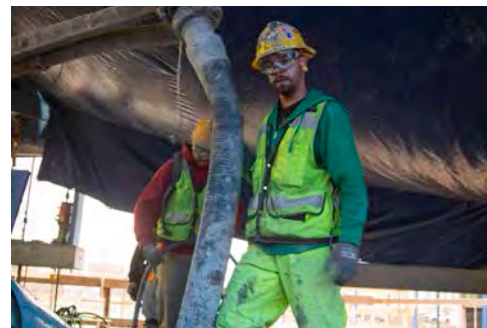
Question: “I have taken a rigging and signaling qualification class through my employer, does this meet the requirements of the CBA?”

Answer: It does meet the requirement while you work for the employer who gave you the training. If you leave that employer, then you are no longer qualified. In order to maintain your status as an “A” List member, you would need to take a 40-hour, 16-hour, or another employers training.

Question: “I have taken a rigging and signaling qualification class from a “third party” training provider (such as Overton Safety), does this meet the requirements of the CBA?”

Answer: Yes, just as it would if you took the training through the Laborers Training Program. Training through a recognized “third party” provider allows your training to be portable from one employer to the next.

For your information, there are several opportunities to take OSHA 10 and Rigging and Signaling over the next four months. Some classes are offered locally and/ or at night. The deadline to meet OSHA requirements for the signal person qualification is this November. The training requirements in the CBA go into effect on January 1, 2015. Avoid the crowds and take the training early.



Luis Lorea, a recent graduate of the Apprenticeship Program, placing concrete on the new bridge in Portland.



AJ Banuelos on her job on the new bridge in Portland.